

It has been found that the works of great composers of music mysteriously yield to mathematical analysis. Their music is not rendered less by such research. The fundamental laws that underlie many of the greatest works in architecture also show an awareness of such laws. However, it is never quite enough to assume that a ma

10/12 point

ker or composer applied such laws. Were it so, life might be very boring. Creativity requires only a sense of such things rather than knowledge about absolute certainty. To know in advance is to use a part of oneself and this is

12/14 point

never enough. All things must be done with all one has. Some of us have more than others but we never have enough. At best we are good

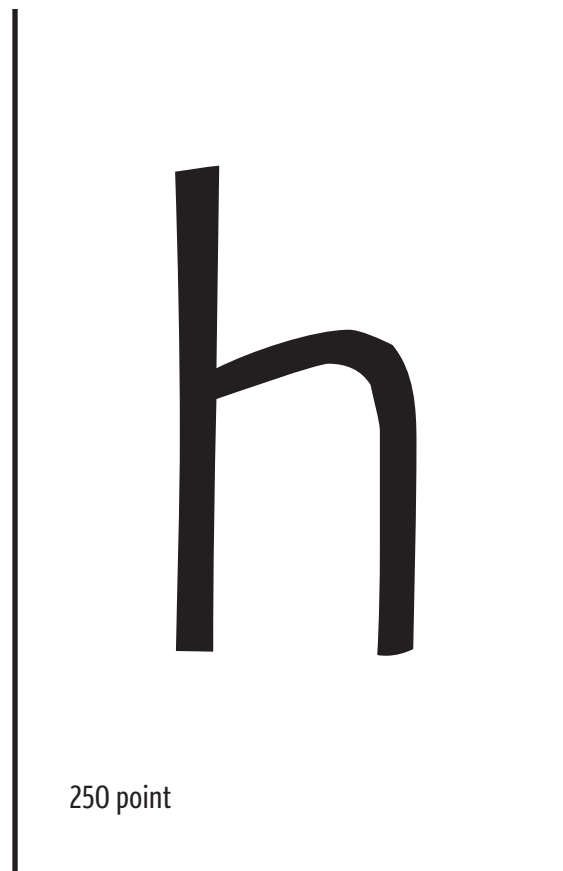
14/17 point

guessers. It has been found that the works of great composers of music mysteriously yield to mathematical analysis

18/21 point

is. Their music is not rendered less by research. The fundamental laws that underlie

24/28 point



ABCDEFGHIJKLMNOPQRSTUVWXYZ &  
abcdefghijklmnopqrstuvwxyz ß fl.,,:;  
\$1234567890% Å Ê Ì Ö Û å é ì ö û

NEW RELEASE

Culpepper™ Light



IT HAS BEEN FOUND THAT THE WORKS OF GREAT COMPOSERS OF MUSIC MYSTERIOUSLY YIELD TO MATHEMATICAL ANALYSIS. THEIR MUSIC IS NOT RENDERED LESS BY SUCH RESEARCH. THE FUNDAMENTAL LAWS THAT UNLIE MANY OF THE GREATEST WORKS IN ARCHITECTURE ALSO SHOW AN AWARENESS OF SUCH LAWS. HOWEVER, IT IS NEV

10/12 point

ER QUITE ENOUGH TO ASSUME A MAKER OR COMPOSER APPLIED SUCH LAWS. WERE IT SO, LIFE MIGHT BE VERY BORING. CREATIVITY REQUIRES ONLY A SENSE OF SUCH THINGS RATHER THAN KNOWLEDGE ABOUT ABSOLUTE CERTA

12/14 point

INTY. TO KNOW IN ADVANCE IS TO USE A PART OF ONESELF AND THIS IS NEVER ENOUGH. ALL THINGS MUST BE DONE WITH ALL ONE HAS. SOME

14/17 point

OF US HAVE MORE THAN OTHERS BUT WE NEVER HAVE ENOUGH. AT BEST WE ARE GOOD GUESSERS. IT HAS BEEN FO

18/21 point

UND THAT THE WORKS OF GREAT COMPOSERS OF MUSIC MYSTERIOUSLY YIELD TO MAT

24/28 point

Y

250 point

H O B G

ABCDEFGHIJKLMNOPQRSTUVWXYZ&  
ABCDEFGHIJKLMNOPQRSTUVWXYZFIFL.,:;  
\$1234567890% ÅÉÏÖÛ ÂÊÏÖÛ

NEW RELEASE

Culpepper™ Light SC



It has been found that the works of great composers of music mysteriously yield to mathematical analysis. Their music is not rendered less by such research. The fundamental laws that underlie many of the greatest works in architecture also show an awareness of such laws. However, it is never quite enough

10/12 point

to assume that a maker or composer applied such laws. Were it so, life might be very boring. Creativity requires only a sense of such things rather than knowledge about absolute certainty. To know in advance

12/14 point

is to use a part of oneself and this is never enough. All things must be done with all one has. Some of us have more than others

14/17 point

but we never have enough. At best we are good guessers. It has been found that the works of great composers

18/21 point

of music mysteriously yield to mathematical analysis. Their music is not

24/28 point



250 point

HObg

ABCDEFGHIJKLMNOPQRSTUVWXYZ&  
abcdefghijklmnopqrstuvwxyzfifl.,:;  
\$1234567890% ÅÉÏÖÛ åéïöû

NEW RELEASE

Culpepper™



IT HAS BEEN FOUND THAT THE WORKS OF GREAT COMPOSERS OF MUSIC MYSTERIOUSLY YIELD TO MATHEMATICAL ANALYSIS. THEIR MUSIC IS NOT RENDERED LESS BY SUCH RESEARCH. THE FUNDAMENTAL LAWS THAT UNDERLIE MANY OF THE GREATEST WORKS IN ARCHITECTURE ALSO SHOW AN AWARENESS OF SUCH LAWS. HOWEVER

10/12 point

IT IS NEVER QUITE ENOUGH TO ASSUME THAT A MAKER OR COMPOSER APPLIED SUCH LAWS. WERE IT SO, LIFE MIGHT VERY BORING. CREATIVITY REQUIRES ONLY A SENSE OF SUCH THINGS RATHER THAN KNOWLEDGE ABOUT AB

12/14 point

SOLUTE CERTAINTY. TO KNOW IN ADVANCE IS TO USE A PART OF ONESELF AND THIS IS NEVER ENOUGH. ALL THINGS MUST BE DONE WITH ALL ON

14/17 point

E HAS. SOME OF US HAVE MORE THAN OTHERS BUT WE NEVER HAVE ENOUGH. AT BEST WE ARE GOOD GUESSERS. IT

18/21 point

HAS BEEN FOUND THAT THE WORKS OF GREAT COMPOSERS OF MUSIC MYSTERIOUSLY

24/28 point

E

250 point

H O B G

ABCDEFGHIJKLMNOPQRSTUVWXYZ&  
ABCDEFGHIJKLMNOPQRSTUVWXYZFIFL.,:;  
\$1234567890% ÅÉÏÖÛ ÅÉÏÖÛ

NEW RELEASE

Culpepper™ SC



It has been found that the works of great composers of music mysteriously yield to mathematical analysis. Their music is not rendered less by such research. The fundamental laws that underlie many of the greatest works in architecture also show an awareness of such laws. However it is ne

10/12 point

ver enough to assume that a maker or composer applied such laws. Were it so, life might be very boring. Creativity requires only a sense of such things rather than knowledge about absolute certa

12/14 point

inty. To know in advance is to use a part of oneself and this is never enough. All things must be done with all one has. Some

14/17 point

of us have more than others but we never have enough. At best we are good guessers. It has bee

18/21 point

n found that the great composers of music mysteriously yield to mathemat

24/28 point

k

250 point

HObg

ABCDEFGHIJKLMNOPQRSTUVWXYZ &  
abcdefghijklmnopqrstuvwxyz fl.,:;  
\$1234567890% ÅÉÏÖÛ åéïöû

NEW RELEASE

Culpepper™ Extra Bold



IT HAS BEEN FOUND THAT THE WORKS OF GREAT COMPOSERS OF MUSIC MYSTERIOUSLY YIELD TO MATHEMATICAL ANALYSIS. THEIR MUSIC IS NOT RENDERED LESS BY SUCH RESEARCH. THE FUNDAMENTAL LAWS THAT UNDERLIE MANY OF THE GREATEST WORKS IN ARCHITECTURE ALSO SHOW AN AWARENESS OF SUCH LAWS. HOWEV

10/12 point

ER, IT IS NEVER QUITE ENOUGH TO ASSUME THAT A MAKER OR COMPOSER APPLIED SUCH LAWS. WERE IT SO, LIFE MIGHT BE VERY BORING. CREATIVITY REQUIRES ONLY A SENSE OF SUCH THINGS RATHER THAN KNOWLED

12/14 point

GE ABOUT ABSOLUTE CERTAINTY. TO KNOW IN ADVANCE IS TO USE A PART OF ONESELF AND THIS IS NEVER ENOUGH. ALL THINGS MUST BE

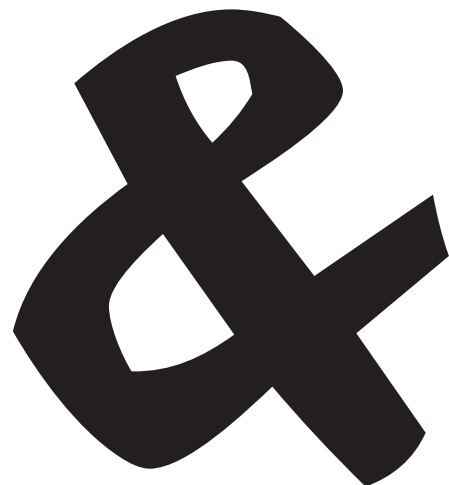
14/17 point

DONE WITH ALL ONE HAS. SOME OF US HAVE HAVE MORE THAN OTHERS BUT WE NEVER HAVE ENOUGH. AT

18/21 point

BEST WE ARE GOOD GUESSERS. IT HAS BEEN FOUND THAT AT THE WORKS OF GREAT COM

24/28 point



250 point

H O B G

ABCDEFGHIJKLMNOPQRSTUVWXYZ&

ABCDEFGHIJKLMNOPQRSTUVWXYZFIFL.,:;

\$1234567890% ÅÉÏÖÛ ÅÉÏÖÛ

NEW RELEASE

Culpepper™ Extra Bold SC

